

EXECUTIVE SUMMARY REPORT

MONONA GROVE SCHOOL DISTRICT

BUILDING TOGETHER. FORWARD TOGETHER.



Granite Ridge Elementary School 2.8.2021

The Past Week:

- Carpet install has begun.
- Social stair completed.
- Classroom sliding glass doors are being installed.
- Brick in Area C
- Metal Panels in Area A

Coming Up in the Week Ahead:

- Paint in Area C.
- Freezer panel installation in kitchen.
- Flooring



Carpet has started to be installed on Level 2 Area B.



B Stairwell Metal Panel Install



Area B/C



Project Fun Fact: Did you know the average snowfall(inches) in Madison, WI through January and February is 23.5 inches. To date, in 2021 we have had ~26 inches. There are still 20 days left in February. Here's hoping Jimmy the Groundhog got it right this year and an early spring is on its way!

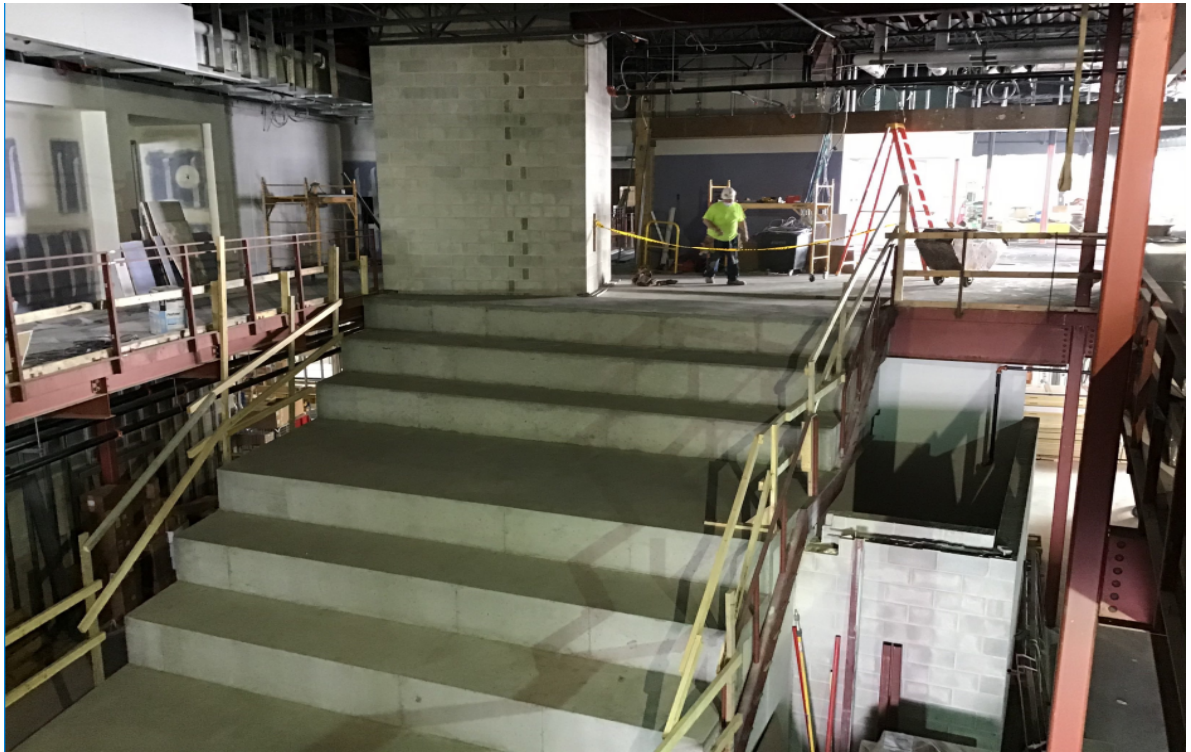
QUESTIONS? Please contact Project Manager Peter Saindon at 608.442.7358 or psaindon@findorff.com

Findorff

EXECUTIVE SUMMARY REPORT

MONONA GROVE SCHOOL DISTRICT

BUILDING TOGETHER. FORWARD TOGETHER.



The Social Stair concrete has been finished and poured out.



Classroom sliding glass doors are in progress of being installed.



Area A/C Exterior Finishes

QUESTIONS? Please contact Project Manager Peter Saindon at 608.442.7358 or psaindon@findorff.com

Findorff